

# EXTERNAL BLUETOOTH BARCODE SCANNER

Xaap now supports an integration to a third party Bluetooth barcode scanner.



## Which Bluetooth scanners are supported in Xaap?

Xaap is currently supporting the Socket Mobile **S800** - 1D Imager Barcode Scanners - SKU# CX2881-1476

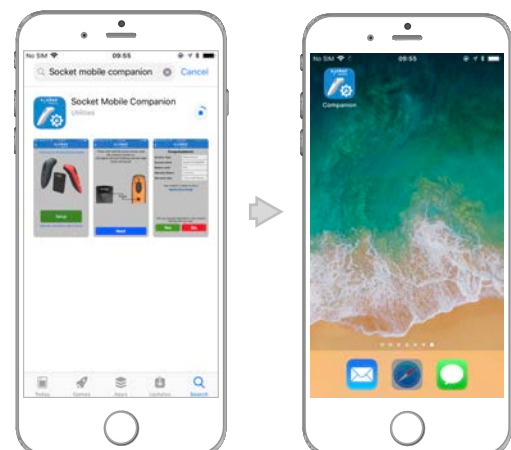
[Click here for the scanner information](#)



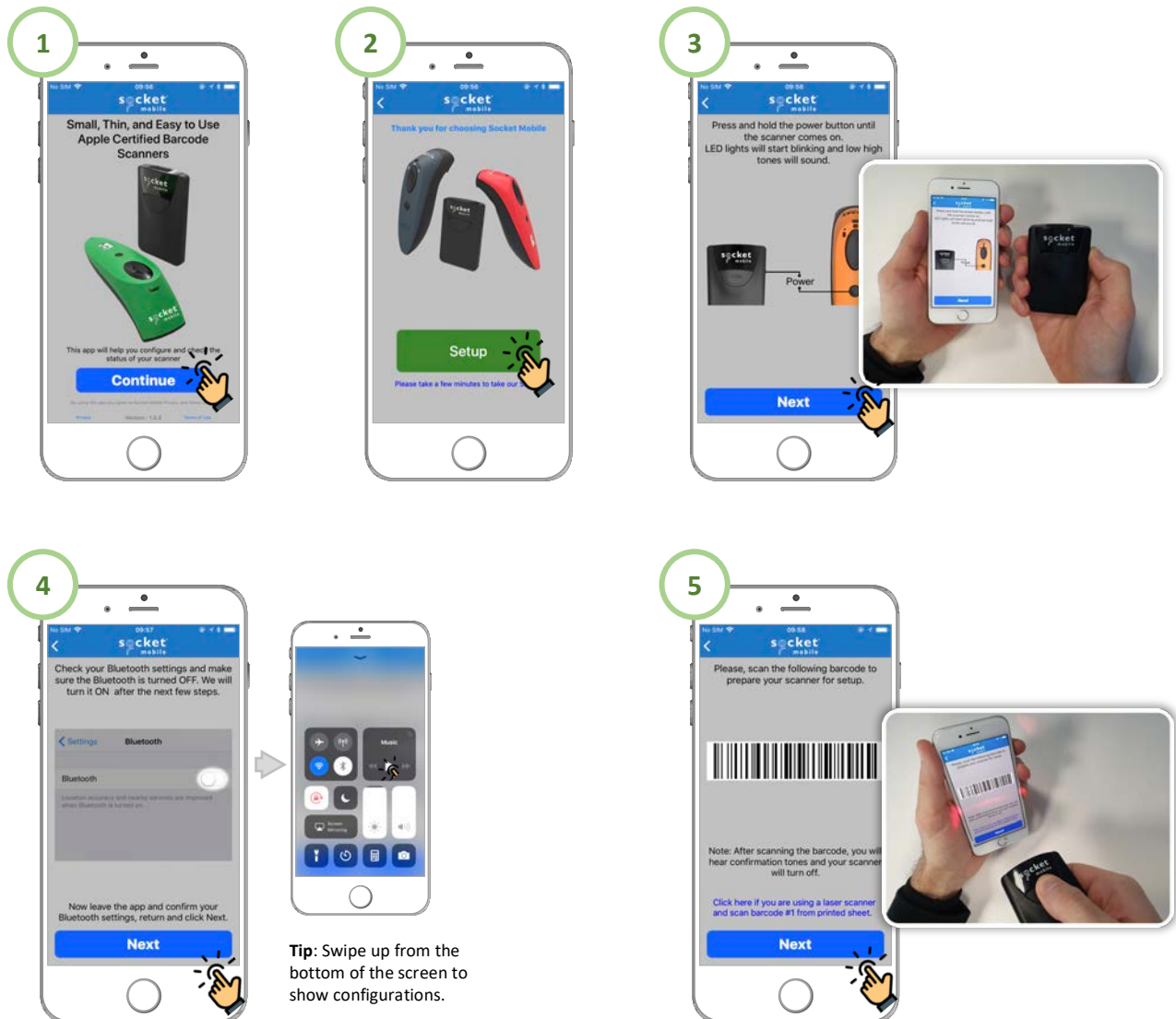
## How to pair the Socket Mobile S800 Barcode Scanner?

1. Download the **Socket mobile companion** app from the App Store. 

The app icon should appear on the home screen.

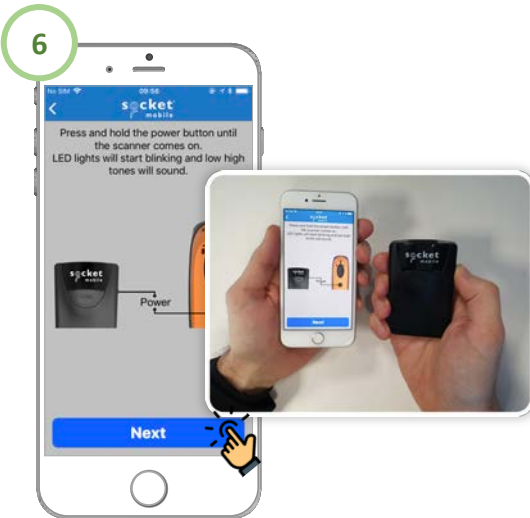


- Follow the instructions on the **Socket mobile companion app** to configure and pair your Bluetooth scanner to your phone.



Continue on the next page...

Instructions to pair continued...



**Tip:** On the home screen open:  
**Settings > Bluetooth**  
and the Socket S800 device will be available. Tap on the device to pair.



**You are Done!**  
The device is now paired and ready to be used in Xaap.



## If a Bluetooth device was previously paired and you want to use it on an ongoing inspection?

Make sure the following configurations are set as follow:

1. Enable the Bluetooth functionality on your phone.  
Swipe up from the bottom edge of the phone to show the phone settings.



2. Turn on your Socket Mobile S800 Barcode Scanner device.  
Press the power button until the power light is on.



3. In **Xaap**, make sure Enable Barcode Scanning configuration is turned on in the Inspection Summary section on an ongoing Inspection.  
Sometimes enabling the barcode functionality could take several seconds after you turn it on.

